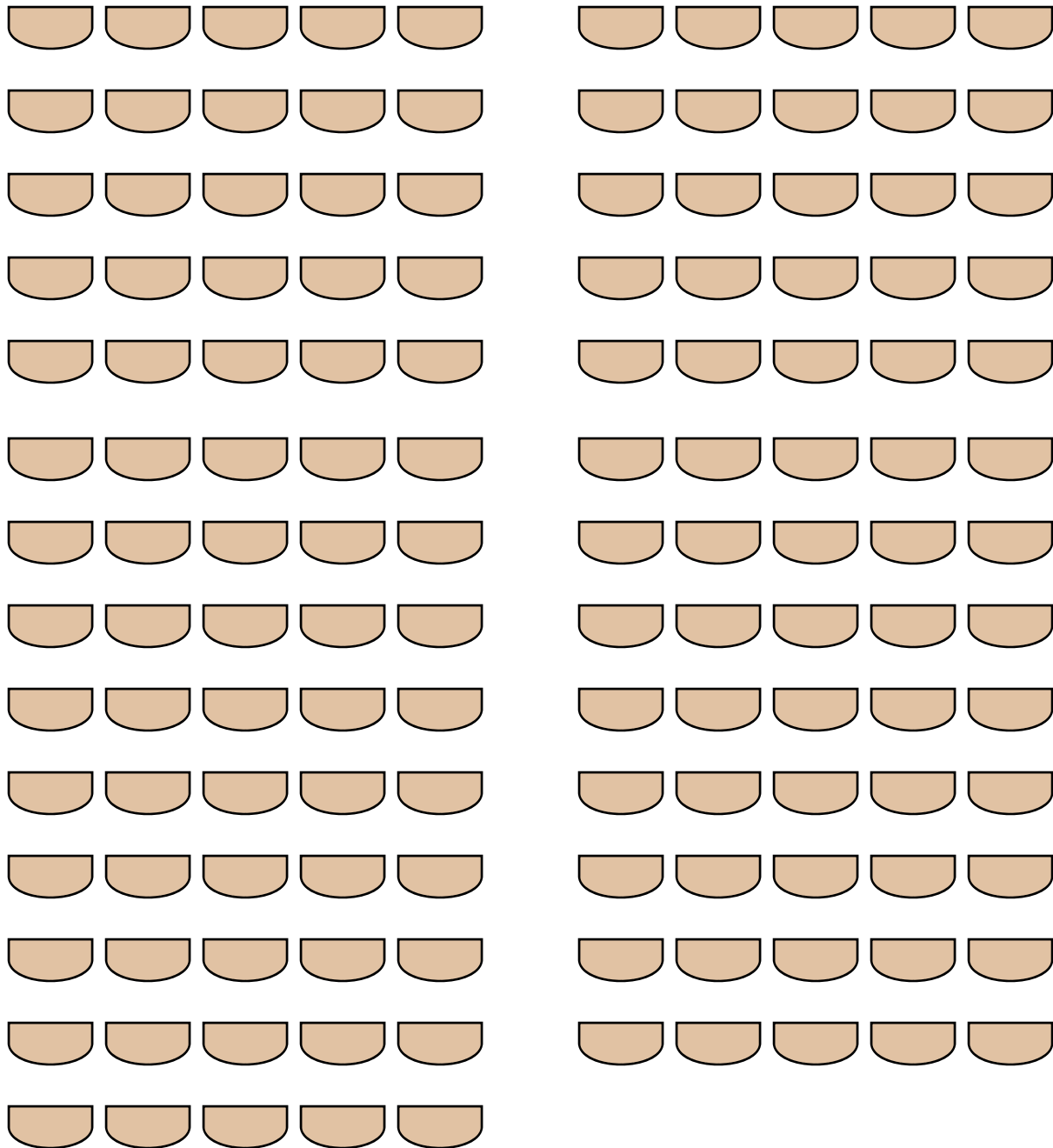


Table & podium

Window



53'

**Suggested general seating (135 max)**

Auditorium East + West  
Rooms 101+ 103

29.5'

Clotet 101 A

Exit

101 B

Clotet 101 C

Exit

Exit

Window

Exit

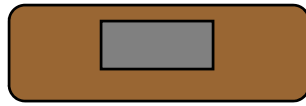
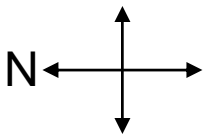
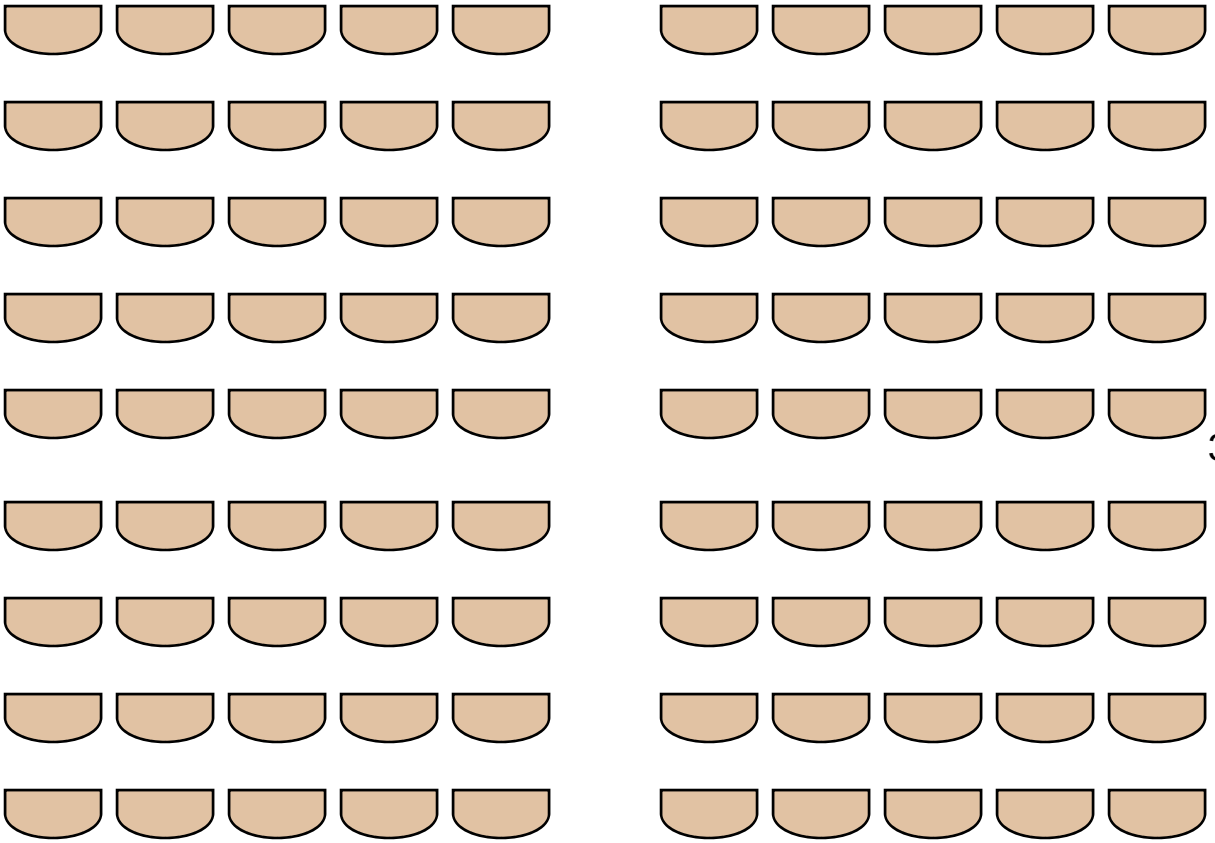


Table & podium

Window



35'

Clotet 101 A

Exit

101 B

Clotet 101 C

Exit

**Suggested general seating (90 max)**

Auditorium East  
Room 101

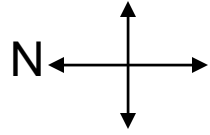
18'

29.5'

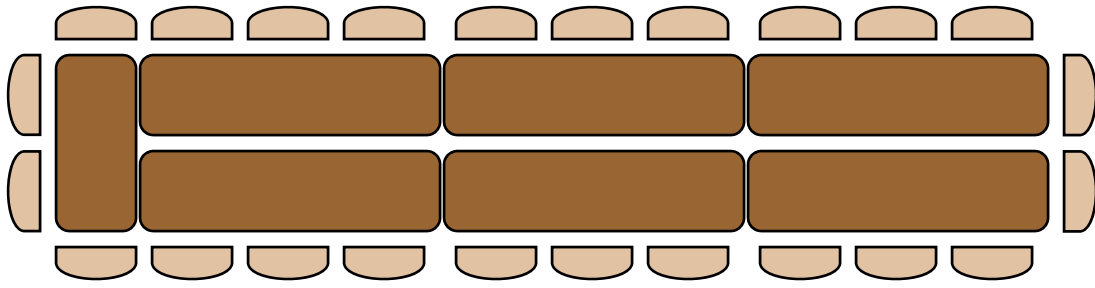
Exit

Window

Exit



← 29.5' →



18' ↓

Closet 101 A

Exit

101 B

Closet 101 C

Exit

**Suggested conference style seating (24 max)**

Auditorium West  
Room 103

Exit

Window

Exit

Return all furniture to this standard configuration

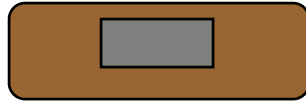
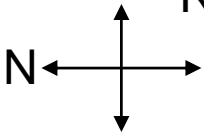
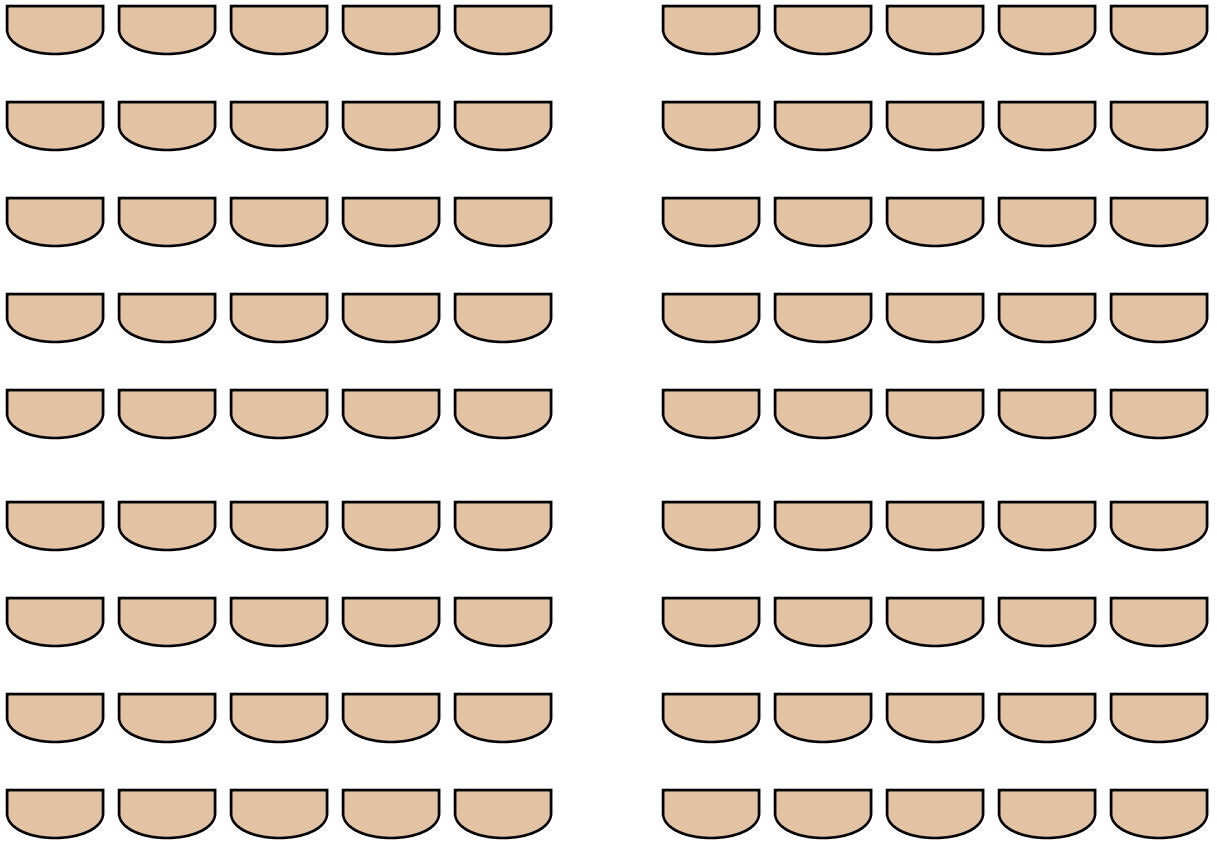


Table & podium



Window

Closet 101 A

Exit

53'

101 B

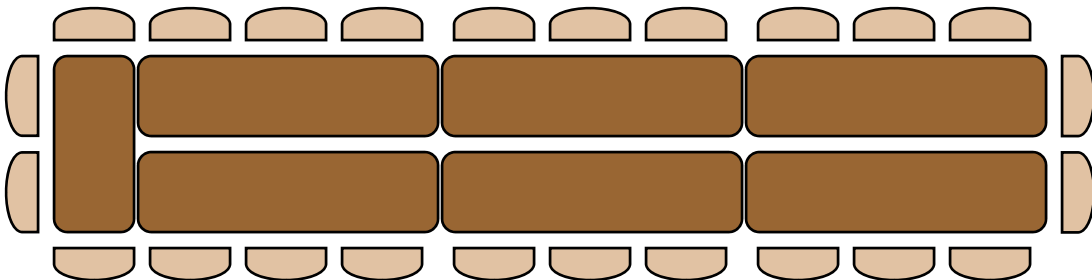
Closet 101 C

Exit

**General seating (100 max 90 shown)**

Auditorium East + West

Rooms 101+ 103



**Conference style seating (24 max)**

29.5'

Exit

Window

Exit